



Elizabeth Grove

Bushey

£370,000

Davidson Frost-Wellings are pleased to present this one bedroom first floor flat moments from Bushey Heath High Street.

The flat is in excellent condition throughout with an open plan kitchen/reception space, a double bedroom and a family bathroom with built-in storage.

Elizabeth Grove is a exclusive, peaceful cul-de-sac within prestigious Heathbourne Village, moments from boutique shops, green spaces and top schools, offering refined, private and well-connected living.

Options to buy 50%, 75% or 100% shared ownership: Subject to approval.

Hertsmere council tax band C
Service charge £1,484 pa
Leasehold 246 years remaining.

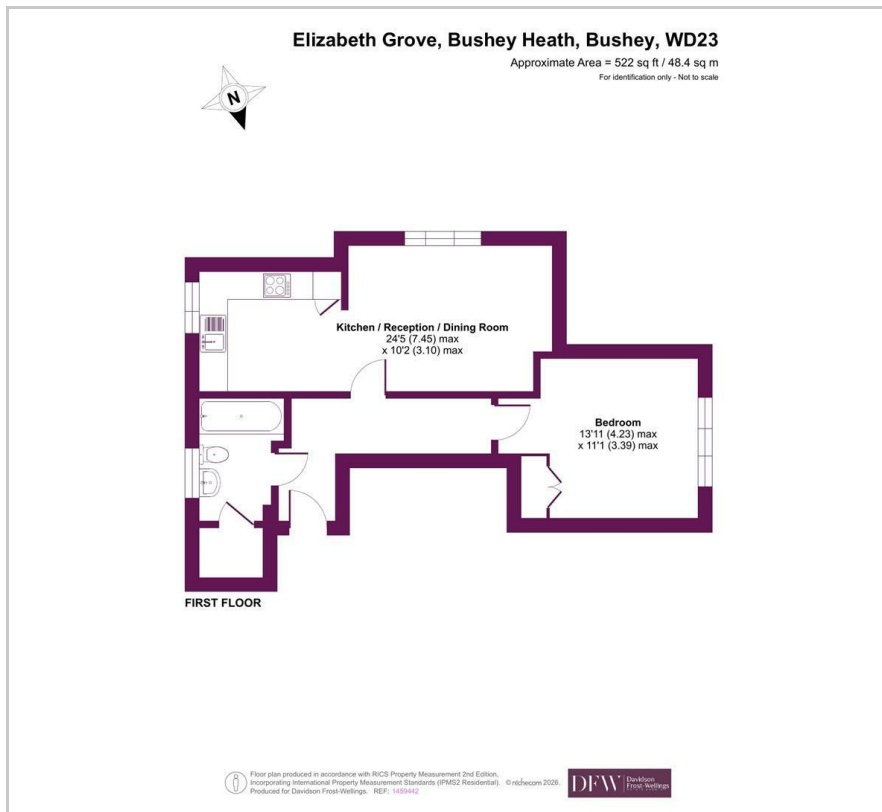
Viewing

Please contact our Davidson Frost-Wellings Office on 020 8954 8806 if you wish to arrange a viewing appointment for this property or require further information.

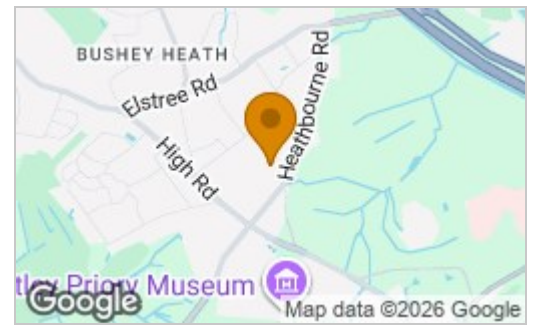
- One bedroom
- First floor
- Open plan kitchen
- Fantastic condition
- Allocated parking
- Exclusive development



Floor Plan

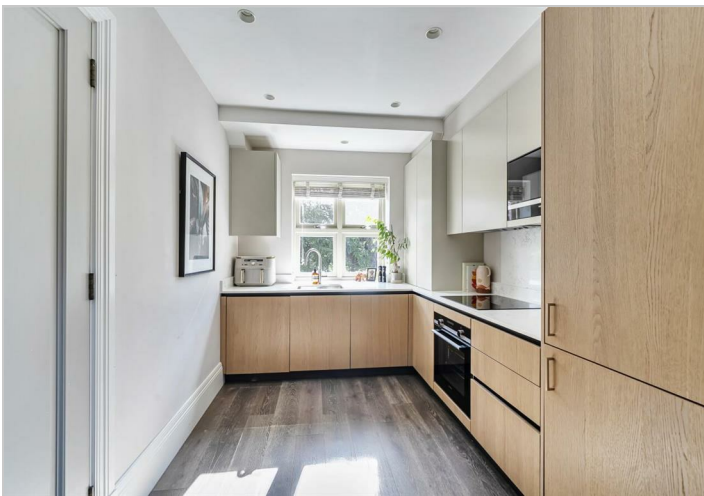
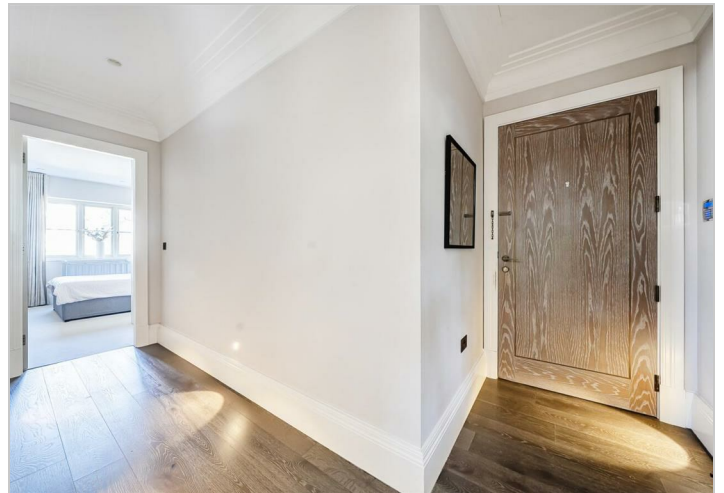


Area Map



Energy Efficiency Rating

	Current	Potential
<i>Very energy efficient - lower running costs</i>		
(92 plus) A		
(81-91) B	82	82
(69-80) C		
(55-68) D		
(39-54) E		
(21-38) F		
(1-20) G		
<i>Not energy efficient - higher running costs</i>		
England & Wales	EU Directive 2002/91/EC	



These particulars, whilst believed to be accurate are set out as a general outline only for guidance and do not constitute any part of an offer or contract. Intending purchasers should not rely on them as statements of representation of fact, but must satisfy themselves by inspection or otherwise as to their accuracy. No person in this firm's employment has the authority to make or give any representation or warranty in respect of the property.